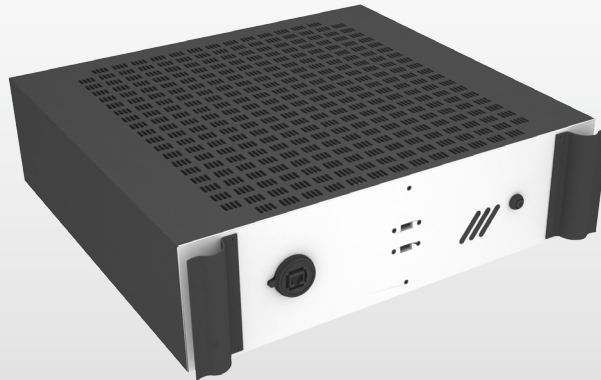


AMS

Active Microwave Sensors



HUB | Connect the AMS devices to the DCS/QCS (and to the WEB)

REMOTE
CONNECTION

1

IMPROVING
EFFICIENCY

2

MAXIMUM
FLEXIBILITY

3

AMS HUB

Using multiple AMS sensors can provide a complex set of parameter giving important information in paper/pulp production.

The AMS HUB is able to connect AMS sensors either to the DCS/QCS via a analog connection or digitally to the WEB providing a direct internet connection to each measuring device.

AMS HUB is able to provide wide data storage capacity and all the elaboration facilities needed to extract suitable information from the acquisitions.

The remote connection from the HUB allows a great flexibility in the applications and simply diagnosis and maintenance procedures.

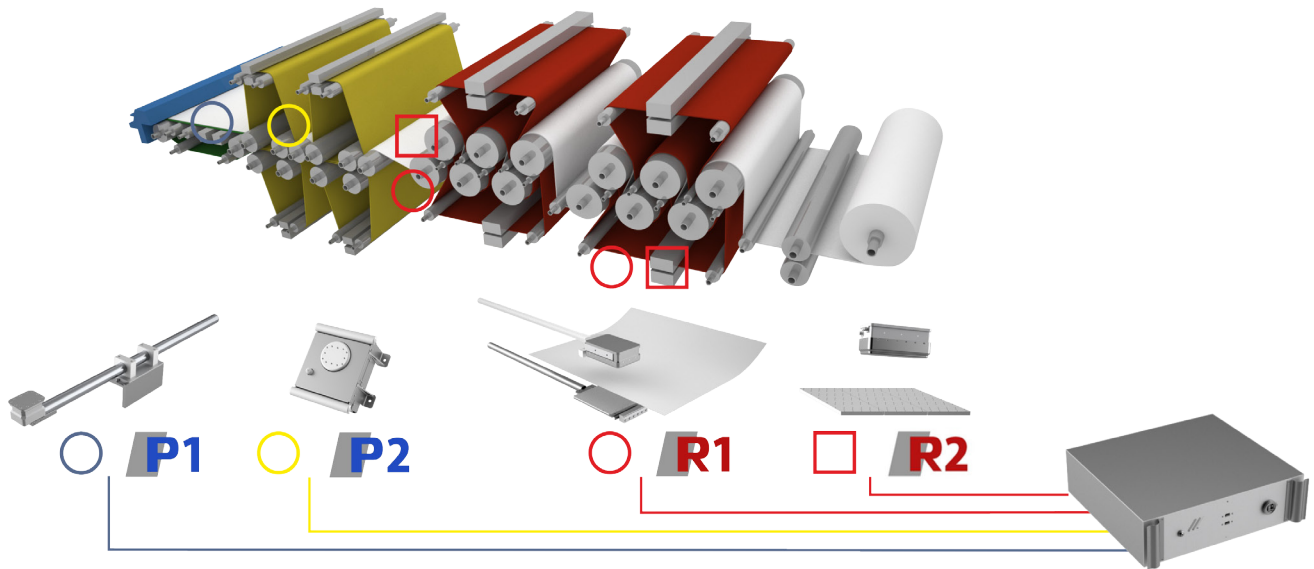
Using this remote connection, the maintenance staff or AME is thus able to verify the correct behavior of each sensor directly from home, in few seconds.

With AMS HUB is possible to manage a complete AMS system in a very simple way, configuring it with maximum flexibility. In fact there is no limit in number and type of sensor used in a single system managed by an HUB.



Mains features

- Historical analysis on multiple data.
- Internal memory can store a big amount of data
- 3d graphic of water content an permeability in felts
- 3G modem for flexible internet connection.
- FFT analysis.
- Remote access and maintenance.
- 3d graphic of water content on tha paper & pulp sheet.

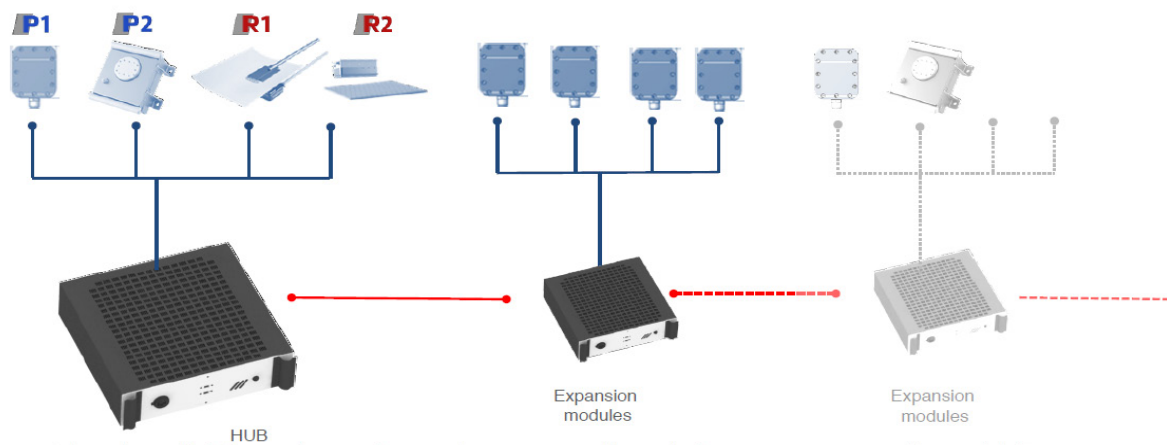


Flexible configuration

Every single HUB could manage up to 4 sensors but it is possible to install Hub expander to extend the sensor network to the needed number of sensor the customer needs. The HUB can be completely configured by the AMS control panel.

The hub, can work standalone managing up to four sensors, for increasing the number you must just add expansion modules.

AMS HUB could be seamlessly connected to the DCS/QCS via simple analog 4-20 mA signals.



Data analysis with the AMS manager

Every AMS sensor which is connected to the AMS HUB provides an high speed digital output to the AMS HUB by using a robust industrial grade connection.

AMS HUB is provided with an internal UMTS router in order to remote connect it from the WEB and:

- View real time data from each sensor on your laptop or smartphone
- Modify sensors parameters and settings
- Save measure file
- Check for sensor status
- Update the software

