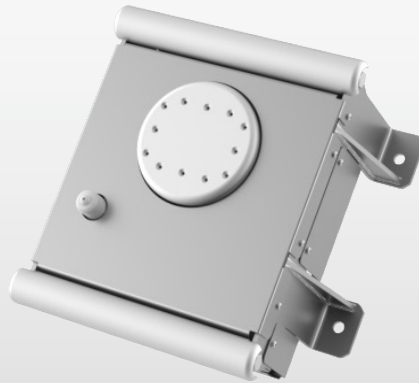


AMS

Active Microwave Sensors



P2

P2 | Planar sensor allows to measure relative moisture and permeability in press section.

INCREASING
QUALITY

1

IMPROVING
EFFICIENCY

2

MAXIMIZING
RUNNABILITY

3

Quality – Efficiency - Runnability

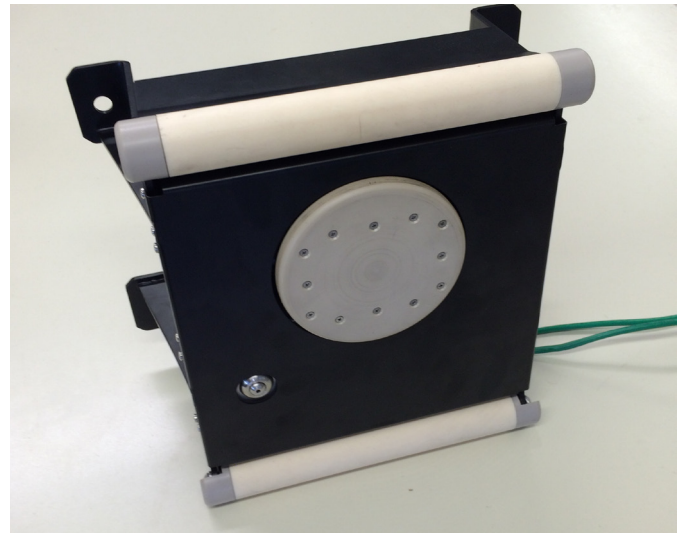
Moisture and water permeability profiles on felts are the key information that help decision making process to improve machine performance, because the conditioning felt, nip loading problem, uneven wearing felt are the “foes” of the press section efficiency in a paper machine.

An integrated solution

P2 works with a proprietary patented technology based on planar active sensors that allows fast, accurate, and “environment independent” measurement and makes this instrument able to measure up to 3000 g/mq of H₂O.

Sensor's data are collected by the AMS HUB and with the dedicated software suite can be produced a variety of reports, such as machine direction (MD) and cross machine direction (CD) profiles and trends over time.

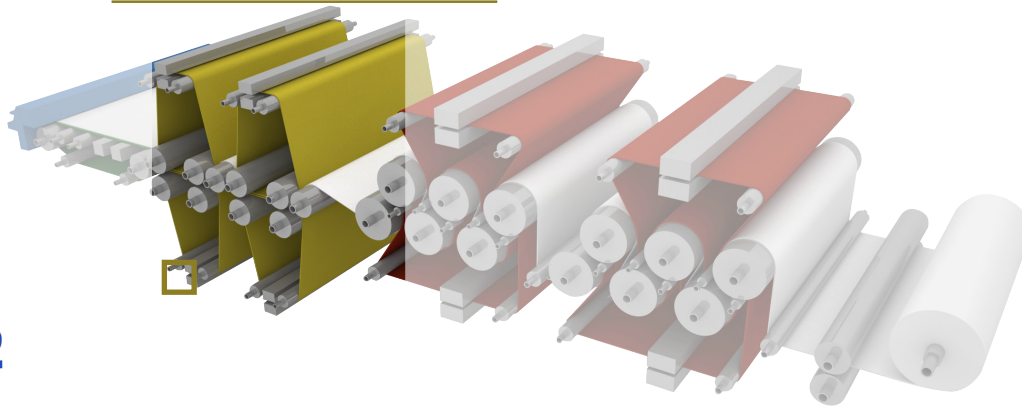
High frequency and statistical analysis will also be performed in order to optimize press section performance.



Main Features

- Full automatic measurement system
- Operator safety tools
- Process optimization
- Energy saving
- Less downtime due to paper break
- Increase felt life
- Comparison of different felts over life span
- Easy Integration in complex AMS Systems

PRESS SECTION



Flexible positioning

Moisture and water permeability profiles of felts are the key information that help decision making process to improve felt performance and finally optimize machine performances.

P2 sensor can do these job in an easy way and thanks to the small size it can be installed in any press section, in fixed point or on a transversal beam to make accurate and reliable profiles in total safety. This also is a big aid for felt's cleaning system to do a very precise job.

Data analysis with the AMS manager

P2 allows to perform an high performance contemporaneous measurement of moisture and permeability also in scanning mode for a very accurate CD analysis of felts.

- Easy to integrate in beams for CD scanning.
- CD and MD moisture profile of felt, up to 2048 sample/sec measurement rate.

Technical specifications

Measurement specifications

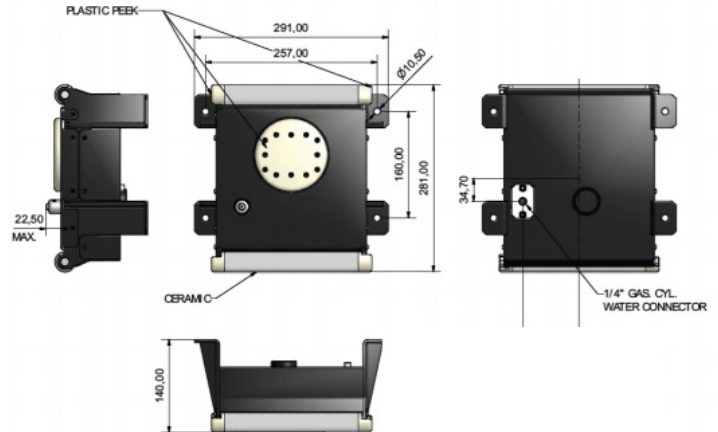
<i>Water content measurement range</i>	<i>g/m² 0 to 3.000</i>
<i>Resolution</i>	<i>g/m² 1</i>
<i>Sample rate</i>	<i>Sample/sec 1024 to 2048</i>
<i>Flow measurement range</i>	<i>ml/min 100 to 2500</i>
<i>Resolution</i>	<i>ml/min 0,1</i>
<i>Sample rate</i>	<i>Sample/sec 256 to 512</i>

Enviromental

<i>Operating temperature</i>	<i>°C 10-80</i>
<i>Protection grade</i>	<i>IP 68</i>

Mechanical Specificatio /R1 Sensor

<i>Weight</i>	<i>Kg 9,5</i>
<i>Dimension (sensor head)</i>	<i>mm 290 x 275 x 140</i>
<i>Dimension (body material)</i>	<i>AISI 304 passivated and 316 Steel</i>



- CD and MD permeability profile of felt, up to 512 sample/sec measurement rate.
- CD and MD surface temperature of felt.

Accessories

- 7m male soriu pigtail
- Fixing screws